



DID YOU KNOW?

Traditionally, spine biopsies are performed using a long incision to provide the most visual accessibility. Today, many doctors perform biopsies by inserting a needle through the patient's skin for less scarring and faster healing.



Southwest Neurospine Institute is the first in El Paso to offer a minimally invasive procedure using the Mazor Robot. This advanced technology, combined with the expertise of Dr. Martin, may provide less rehabilitation from surgery and get patients back to normal activities much more quickly.

If you suffer from back pain, log onto www.swnsi.com to learn more about robotic spine surgery.

1725 Brown St.
El Paso, TX 79902

(915) 590 - 2225

MKC0070-01 Rev.B



For more information on spine surgery visit www.MazorRobotics.com

© 2013 Mazor Robotics Ltd. All rights reserved.

Biopsies



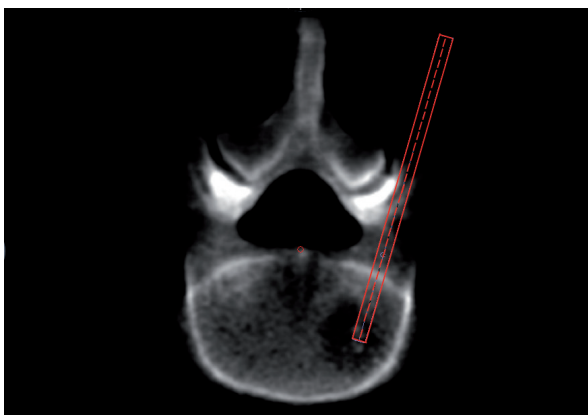
Renaissance
From Art to State of the Art

www.MazorRobotics.com



Biopsies with Mazor Robotics Renaissance™

What is a biopsy?



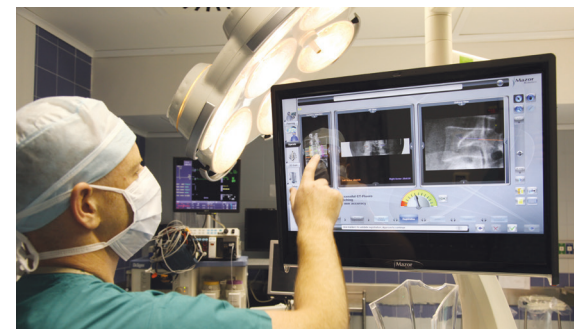
A biopsy is the removal of a small sample of tissue from a suspected part of the body for examination and making a definitive diagnosis—for example, to determine if the abnormal tissue is benign, malignant, or infected. Biopsies can be as small as a millimeter (1/25th of an inch).

How is a biopsy performed?

Biopsies are usually taken with a needle through a small incision. To compensate for the lack of direct visual accessibility, surgeons use computed tomography (CT) and X-ray images to guide the biopsy.

Finding the right spot for the biopsy can be difficult, especially with very small lesions. This can increase operation time, and may cause more tissue damage and a larger scar.

What are the advantages of biopsies performed with Renaissance?



Mazor Robotics Renaissance allows your surgeon to create a preoperative surgical blueprint, which acts as a map for pinpointing the exact location to take your biopsy. During the procedure, Renaissance guides your surgeon according to your surgical blueprint, which can increase accuracy while possibly reducing the amount of fluoroscopy needed.¹



→ **Ask your doctor if Mazor Robotics Renaissance Spine Surgery is right for you.**

1. Kantelhardt SR, Martinez R, Baerwinkel S, Burger R, Giese A, Rohde V. Perioperative course and accuracy of screw positioning in conventional, open robotic-guided and percutaneous robotic-guided, pedicle screw placement. Eur Spine J. 2011;20(6):860-868.